

Welcome Back to King Edward Community School!

September, 2020

A Guide to a Safe Re-Opening



A guide to help you know what to expect when you come back:

Slide 3- Greeting

Slide 4- Before You Come to School

Slide 5- Arrival

Slide 6- Assigned Doors

Slide 7- Entering the School

Slide 8- Cohorts

Slide 9- Lunch Program

Slide 10- Will the Classrooms look different?

Slide 11- Recess

Slide 12- Walking in the School

Slide 13- Washrooms

Slide 14- Increased Cleaning/Disinfecting

Slide 15- Appointments/Early Pick Ups

Slide 16- End of Day Pick Ups

Slide 17- Using the Outdoors

Slide 18- What Happens if my Child
Becomes Ill at School?

Slide 19- Learning

Slider 20-Student Mental Health/Well Being

Slide 21- General Recommendations

Slide 22- Staff List and Emails

Slide 23- Helpful Links/Resources

Slide 24- Closing

We are so happy to see you!



The end of last school year was very challenging due to COVID-19. We really miss all of you and are looking forward to working with you again this fall.

The following slides will help you understand the new safety rules at King Edward Community School. Much of school will look the same, but we do have some changes. These changes were created to help keep everyone safe and follow both Winnipeg School Division and provincial recommendations. All staff will be trained on these new protocols prior to school opening for students.

Guidelines are subject to change to meet current health recommendations.

Before you come to school, the critical role of families:



- **Caregivers must prescreen** their child/children to ensure they are not exhibiting any COVID-19 symptoms before coming to school. Any student who is showing any symptoms (including runny nose, sneezing, coughing, etc.) must stay home.
- See this link for the screening tool:
<https://sharedhealthmb.ca/covid19/screening-tool/> **NOTE: ALL FAMILIES MUST ADHERE TO THE REGULATIONS ON THIS LINK**
- **Pack a water bottle.** Water fountains will not be operating at this time. Students will be able to fill their bottles throughout the day.
- **Masks are mandatory for staff and students grades 4 and up.** The school division will be providing two reusable masks per student in these grades.
- **We strongly recommend that ALL students wear masks.**

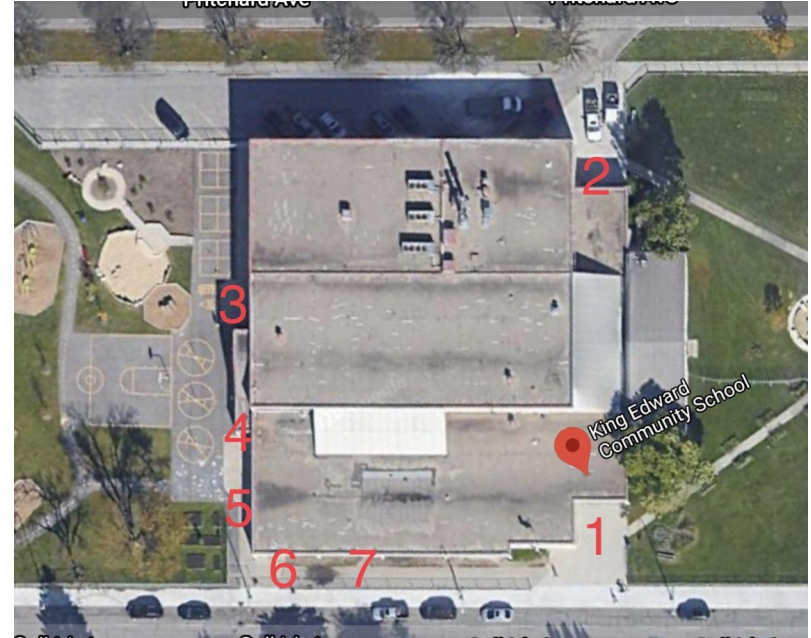
Arrival:



- Students will arrive **no earlier than 8:50 am.**
- Put on your mask before entering the building.
- Please wait for staff to greet students **for screening and hand sanitizing.**
- While waiting there will be **marked spacing 6 feet apart outside of the school.**
- **Parents/Caregivers will not be permitted inside the school at this time.**
- **NOTE:** If you arrive **late**, please enter the main Selkirk doors. A staff member will assist you.

Assigned Doors:

- Rooms 110/111- N/K entrance (door 3).
- Room 116 - Classroom exit door (door 5).
- Room 117 - Classroom exit door (door 6).
- Room 118 - Classroom exit door (door 7).
- Rooms 119, 120, 129 - Selkirk main entrance (door 1)
- Rooms 206, 208 - Pritchard entrance (door 2)
- Rooms 210, 211 - Playground doors (door 4)



Entering the School



- Use assigned doors.
- Answer screening questions (if you pre-screen your children this process is much shorter).
- Walk straight to your classroom with your teacher following the screening.
- Sanitize hands upon entry.
- **NOTE:** The staff may look a bit different. We will all be wearing masks to help keep everyone safe.

Cohorts:



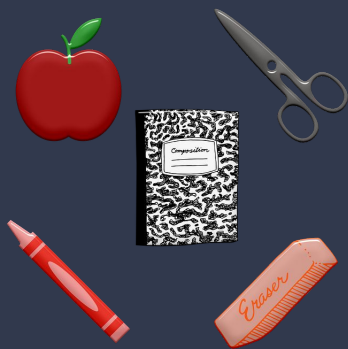
- **Cohorts** are groups of students that will stay in the same part of the building, have recess together, and have lunch together. Lunch will be in the classrooms.
- Nursery/Kindergarten: Rooms 110 and 111
- Grades 1/2 Cohort: Rooms 116, 117, and 118.
- Grade 3/4 Cohort: Rooms 119, 120 and 204.
- Grade 5/6 Cohort: Rooms 208, 210, and 211.

Lunch Program



- Lunch Program will continue.
- All students will eat lunch in their cohorts.
- Lunch will be divided into two periods. Students will alternate between eating and having a break.
- **There will be no heat up lunches at this time.** Please send lunches that can be eaten cold.
- Any questions about registration or program questions, please contact the school office.
- Care for students over the lunch hour is reserved for those families who are working or attending classes.

Will the classrooms look different?

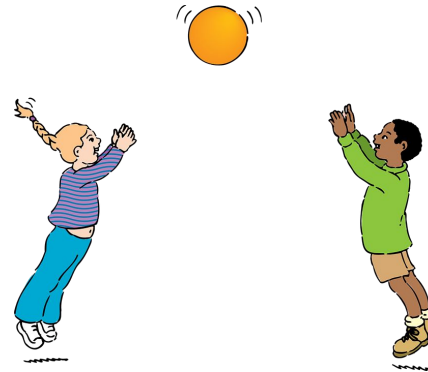


- Classrooms will largely look the same.
- Some modifications are necessary to keep everyone safe and ensure **seating is at least 1 meter apart.**
- Student supplies will no longer be communal. Each student will receive their own school supplies.
- **NOTE:** Performing Arts and Physical Education will continue following safety guidelines.
 - Performing Arts will take place in the classroom with the teacher rotating throughout the school.
 - Physical Education will take place outside as much as possible, please send students to school prepared to be outside.

Recess

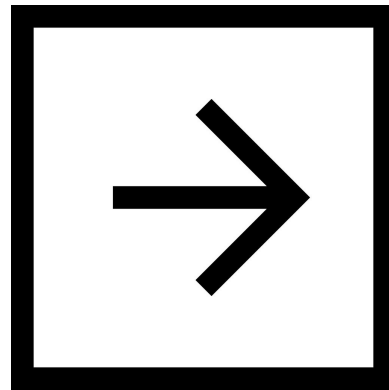


- Recesses will be staggered between the grade 1/2 and the grade 3/4 cohorts.
- Grade 5 and 6 teachers will find an appropriate time for brain breaks in both the morning and afternoon.
- All cohorts will have their own recess equipment.
- **NOTE:** The play structure will not be sanitized between uses. Students will wash or sanitize their hands before and after recesses.



Walking in the School

- Please stay to the right (follow the arrows on the floor).
- Stay 6 feet apart (the markings are set 6 feet apart to help you distance appropriately).



Washrooms:



- The washrooms will now be separated by cohorts.
- The Grade 1/2 Cohort will use the washrooms located on the main floor outside of room 116..
- The Grade 3/4 Cohort will use the washrooms on the main floor across from the office.
- The Grade 5/6 Cohort will use the washrooms on the second floor.
- There will be a system to monitor washroom use.

Increased Cleaning/ Disinfecting:

- Our custodial team has been working very hard over the summer to make sure we are ready for a safe return. Thanks so much!
- The school has increased the cleaning schedule which includes frequent cleaning of door knobs, faucet handles, electronic devices, washrooms, etc.
- All classrooms will have sanitizer as well.



Appointments/ Early Pick Ups

- Unfortunately at this time Parents/Caregivers and visitors are not permitted in the school.
- Please call the office if your child/children need to be picked up early so we can have them ready. **204-586-8381**.
- **Once you arrive please buzz the office from either the Selkirk or Pritchard door and a staff member will ensure a safe meet up outside of the school.**
- If you would like to meet with a school administrator or your child's teacher please call the school to set up a meeting.

Pick Ups

- Caregivers are asked to **meet students outside of their designated doors.**
- N/K students and primary students will be closely monitored and handed off for pick ups
- Staff will be available at the doors for assistance.
- Parents/Caregivers are not allowed in the school at this time.



Using the Outdoors:



- King Edward Community School always promotes using the outdoors as our classrooms. It is recommended that teachers use the outdoors as often as possible.
- Please ensure your child is dressed for the weather.

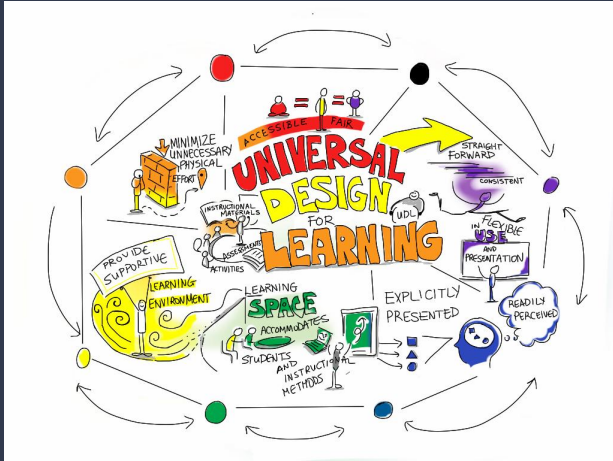


What happens if my child becomes ill at school?



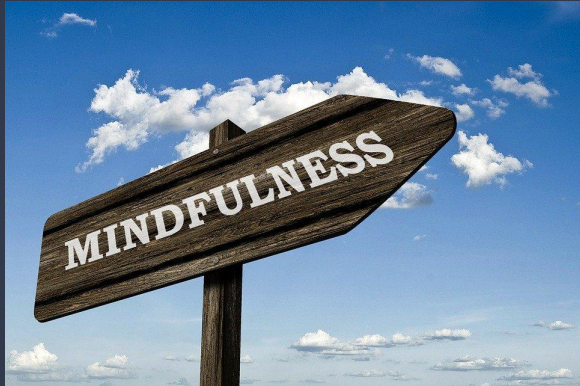
- If a student develops symptoms at school they **must go home immediately** for the safety of others.
- If ill the student will be removed from their classroom, given a mask, and will be isolated in a separate room.
- You will be called to pick up your child immediately.
- **Once you, or designate, arrive, buzz the school, or call 204-586-8381, and a staff member will walk your child out to meet you.**
- Those with symptoms should be tested. If the test is negative for COVID-19, they can return 24 hours after symptoms resolve.
- If individuals do not get tested, they should isolate for 14 days from symptom onset, and they may return if symptoms have resolved at that time.
- A sick child can return to the school once it has been determined that it is safe to **do so by their health care provider or public health.**
- If a student has a positive test, further direction will be provided by public health.
- Please call Health Links at 204-788-8200 to seek further information.

Learning:



- All Winnipeg School Division teachers will utilize WSD assessment tools, observations, and professional judgement to determine **strengths, challenges, and next steps in student learning.**
- Targeted instruction will be crafted to meet the learning needs of your children.
- **The learning focus will be on literacy, mathematics, and student well being/mental health.**
- King Edward Community School will continue Reading Recovery for Grade 1 students
- We have a full time literacy support teacher, a full time resource teacher, and a full time guidance counselor.
- **All classrooms will use either SeeSaw or Google Classrooms** (for communication and for possible virtual learning)

Student Mental Health/Well Being



- COVID-19 has been tough on all of us, including our students. Student mental well-being will be talked about and monitored as students return to school.
- Staff will be receiving training on how to best support students as they return to school.
- King Edward Community School will continue to be supported by Clinical Support Services (Psychology, Social Work, Speech and Language, and Literacy).

[illegible]

- Stay home if ill.
- Bring a water bottle.
- Masks are mandatory for staff and students grades 4 and higher. Masks are recommended for all students.
- Wash your hands with soap multiple times a day (e.g. start and end of the day, when using washrooms, before food prep/eating, when they are dirty, after wiping your nose, etc.).
- Hand Sanitizer is also available at the school.
- Keep 6 feet between yourself and others whenever possible.
- Follow seating instructions from your teacher.
- Everyone must follow the guidelines to keep everyone safe.
- No item sharing (food, water bottles, musical instruments, books, games, toys, etc.).

Staff List & Emails

Room 110- Ms. Sacco

Nursery/Kindergarten asacco@wsd1.org

Room 111 - Ms. Morais

Nursery/Kindergarten smorais@wsd1.org

Room 116- Ms. Montgomery

Grade 1/2 kmontgomery@wsd1.org

Room 117- Ms. Tymchyshyn

Grade 1/2 mtymchyshyn@wsd1.org

Room 118- Ms. Edmondson

Grade 1/2 medmondson@wsd1.org

Room 119- Ms. Klein

Grade 3/4 bklein@wsd1.org

Room 120- Ms. Kremer

Grade 3/4 skremer@wsd1.org

Room 206 - Mr. Radawetz

Grade ¾ - aradawetz@wsd1.org

Room 208 - Ms. Shumsky

Grade 5/6 kshumsky@wsd1.org

Room 210 - Ms. Foreman

Grade 5/6 sforeman@wsd1.org

Room 211 - Ms. Page

Grade 5/6 lpagew@wsd1.org

Room 129 - Ms. Lane

Learning Assistance Centre slane@wsd1.org

Reading Recovery/Literacy Support

Anna Choy- achoy@wsd1.org

Literacy Support - Ms. Morais smorais@wsd1.org

Performing Arts - Ms. Ella egolubchik@wsd1.org

Phys. Ed - Mr. Klassen jefklassen@wsd1.org

Guidance Counselor - Mr. Tyson jtyson@wsd1.org

SERT - Ms. Wesley dwesley@wsd1.org

Helpful Links/Resources

Link to WSD Pandemic Planning:

<https://www.winnipegssd.ca/Parents/PandemicPlanning/Pages/default.aspx>

Link to WSD Pandemic Planning Framework:

<https://www.winnipegssd.ca/Parents/PandemicPlanning/Documents/WSD%20Framework%20for%20School%20Planning%20during%20pandemic%20WEB.pdf>

Home schooling Information:

<https://www.edu.gov.mb.ca/k12/schools/ind/homeschool/index.html>

Return to School Information for Parents/Guardians

https://manitoba.ca/asset_library/en/covid/k-12-reopeningplan-guideforparents.pdf

Parent/Guardian FAQs

https://www.winnipegssd.ca/Parents/PandemicPlanning/Documents/parent_guardian_faq.pdf

Restoring Safe Schools

https://manitoba.ca/asset_library/en/covid/k-12-reopeningplan-guidance.pdf

At Home Screening Tool

<https://sharedhealthmb.ca/covid19/screening-tool/>

King Edward Community School Website

<https://www.winnipegssd.ca/schools/KingEdward/Pages/default.aspx>

Closing:



In closing, we want to say how excited we are to see our King Edward Community School student and families. These guidelines are set to best protect everyone and keep everyone safe. We realize that some of these restrictions are not normal. We can't believe we have to ask parents/caregivers to stay out of the school, but we understand why we must do so. We wish everyone a safe and exciting year of learning!

Sincerely,

Brad Davidson and Jolene Boulton

bdavidson@wsd1.org

jboulton@wsd1.org

204-586-8381